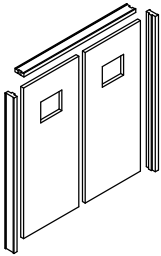


**Installation Instructions For A Double Simon Door & KD  
Frame In New CMU Construction  
Fire Rated**

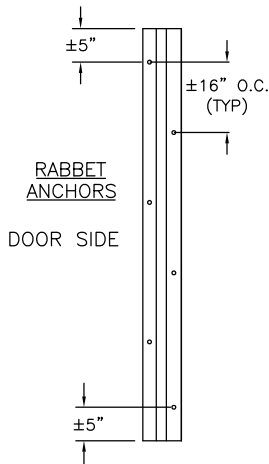


1. Set the crate, which will be marked with the specific Tag location, at the opening. Remove attached packing list and check contents against list and for damage. Notify Simon Door customer service at 1-866-894-7511 if parts are damaged or missing. Retain packing material if possible freight damage. **Fire rated doors must be installed per these instructions and current NFPA 80.**
2. Check building plans for swing and location of jambs in wall structure.
3. Fasten jambs to header with 3/16 inch flat head screws supplied using predrilled holes. Be sure that match marks on header align with corresponding marks on jambs.
4. Carefully raise jamb assembly onto slab at specified location. Carefully place wood spanner between jamb legs at floor and half way up jambs. Anchor jamb floor clips to slab. Do not scratch jambs.
5. Plumb jambs and level header-use adequate bracing to hold in place. Be sure jambs are parallel and header is level. Place wire frame anchors, 3 per side, as block is placed.
6. Set frame with supplied #14x3-3/4" Crete Flex screws. Using field drilled & countersunk holes anchor frame with supplied screws per below instructions below for indicated wall construction. Place screws in solid structure. Frame shall be tightly shimmed at each hinge location and at each frame screw. Two (2) beads of fire-rated caulking compound (by others) shall be injected behind each jamb member after setting frame in rough opening. In addition to frame screws through field drilled holes, one (1) #14x3-3/4" Crete Flex frame screw shall replace one hinge screw at each hinge location and two (2) #14x3-3/4" Crete Flex screws through the strike plate.

**NOTE:**

1. Hinge & strike countersink must be deepened to make Crete Flex screws set flush.
2. 3 hinge screws are required to attach hinge to door (supplied).

- a. **CMU/Concrete**-Field drill 1/4 inch hole in both jamb and header rabbets. Drill into solid structure with 7/32 X 4" masonry bit by others. Place fastener 5" or 6" from each end of jamb and header as shown in drawing #1. Drill for balance of anchors at 16" o.c. staggered in rabbets. Countersink 82 deg to recess screw head.
- b. **Steel**-Same as above except field drill and tap steel structure 1/4-20 to accept supplied screws.



O.K. TO RELEASE    MANAGEMENT: \_\_\_\_\_    DATE: \_\_\_\_\_  
 PRODUCTION: \_\_\_\_\_    DATE: \_\_\_\_\_  
 COST CONTROL: \_\_\_\_\_    DATE: \_\_\_\_\_

NO PART OF THIS DRAWING MAY BE REPRODUCED, STORED IN A RETRIEVAL SYSTEM, OR TRANSMITTED IN ANY FORM OR BY ANY MEANS, ELECTRONIC, MECHANICAL, PHOTOCOPYING, RECORDING OR OTHERWISE, WITHOUT THE PRIOR WRITTEN CONSENT OF SIMON® DOOR COMPANY LLC.

THE DATA CONTAINED IN THIS PUBLICATION IS FOR THE CONFIDENTIAL USE OF THE PURCHASER ONLY. THIS DATA IS NOT TO BE SOLD OR OTHERWISE PROVIDED TO THIRD PARTIES IN ANY FORM.

© COPYRIGHT SIMON® DOOR COMPANY LLC. 2006  
 PATENTS PENDING

**SIMON / DOOR**

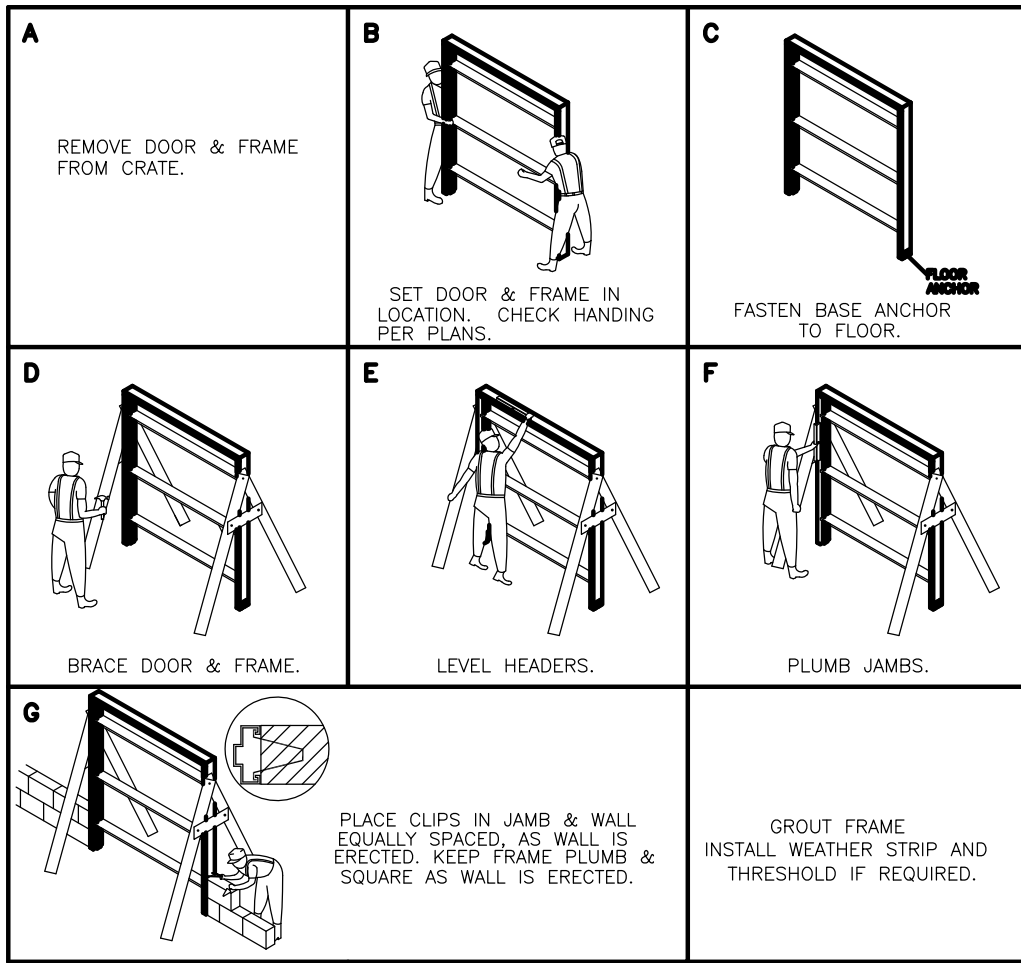
**COMPANY LLC.**

**P.O. BOX 4557 BROWNSVILLE, TX 78523  
 1-866-894-7511 / FAX: (956) 831-7530**

**INSTALLATION INSTRUCTIONS - DOUBLE SIMON DOOR  
 & KD FRAME IN NEW CMU CONSTRUCTION  
 FIRE RATED**

<b>PART. NO:</b>	<b>SD-F19</b>	<b>PAGE:</b>	<b>1 OF 2</b>
<b>SCALE</b>	<b>DWN BY</b>	<b>REV. #</b>	<b>DATE</b>
<b>N.T.S.</b>	<b>MDC</b>	<b>3</b>	<b>07/14/08</b>

7. Apply small amount of silicone if desired (by others) under each countersunk anchor & snug up. Shim as necessary to hold plumb & level. Check frame width by moving spanner carefully up frame to insure that jambs are parallel. Do not scratch jambs.
8. Remove spanners.
9. Hang door. Be sure to place grey slotted plastic hinge backer plates under both door and jamb hinge leaves if standard weight hinges are used.
10. Adjust shims and anchors if necessary to maintain uniform clearances between door and frame. Adjust as required so door swings freely without binding.
11. Caulk as specified by NFPA 80.
12. Install hardware (by others) & adjust to operate properly. **Note: Wrap locksets with supplied ceramic paper per Warnock Hersey instructions.**



O.K. TO RELEASE    MANAGEMENT: \_\_\_\_\_    DATE: \_\_\_\_\_  
 PRODUCTION: \_\_\_\_\_    DATE: \_\_\_\_\_  
 COST CONTROL: \_\_\_\_\_    DATE: \_\_\_\_\_

NO PART OF THIS DRAWING MAY BE REPRODUCED, STORED IN A RETRIEVAL SYSTEM, OR TRANSMITTED IN ANY FORM OR BY ANY MEANS, ELECTRONIC, MECHANICAL, PHOTOCOPYING, RECORDING OR OTHERWISE, WITHOUT THE PRIOR WRITTEN CONSENT OF SIMON® DOOR COMPANY LLC.

THE DATA CONTAINED IN THIS PUBLICATION IS FOR THE CONFIDENTIAL USE OF THE PURCHASER ONLY. THIS DATA IS NOT TO BE SOLD OR OTHERWISE PROVIDED TO THIRD PARTIES IN ANY FORM.

© COPYRIGHT SIMON® DOOR COMPANY LLC. 2006  
 PATENTS PENDING

# SIMON / DOOR

**COMPANY LLC.**

**P.O. BOX 4557 BROWNSVILLE, TX 78523**  
**1-866-894-7511 / FAX: (956) 831-7530**

**INSTALLATION INSTRUCTIONS - DOUBLE SIMON DOOR & KD FRAME IN NEW CMU CONSTRUCTION FIRE RATED**

<b>PART. NO:</b> SD-F19	<b>PAGE:</b> 2 OF 2
<b>SCALE</b>	<b>DWN BY</b>
N.T.S.	MDC
<b>REV. #</b>	<b>DATE</b>
3	07/14/08